

FIND YOUR CLOSEST OFFICE

IEC Telecom Europe & Headquarter

Immeuble Le Cerame
47 Avenue des Genottes
FRANCE
T. +33 (01) 40 17 08 03
E. info-ea@iec-telecom.com

IEC Telecom UAE Dubai Office

Sheikh Zayed Road, Indigo Icon Tower
Office 1505-1506 JLT, Dubai
UNITED ARAB EMIRATES
T. +971 (0) 4 447 5180
E. info-mea@iec-telecom.com

IEC Telecom UAE Abu Dhabi Office

Office #3811,
Addax Tower, Reem Island,
Abu Dhabi
UNITED ARAB EMIRATES
T. +971 2 550 0446
E. info-mea@iec-telecom.com

IEC Telecom Sweden

c/o Kolonien, Telefonvägen 30, våning 1,
126 26 Hägersten,
SWEDEN
T. +46 10 33 00 533
E. info-se@iec-telecom.com

IEC Telecom Afghanistan

Office#3, Kalemzai Towers, Baraki Square,
Kabul AFGHANISTAN
T. +93(0) 796 17 17 41
E. info-af@iec-telecom.com

IEC Telecom Kazakhstan

Almaty, 43/56 Karibzhanov Str
REPUBLIC OF KAZAKHSTAN
T. +7 727 258 8533 (ex.165)
E. info-kz@iec-telecom.com

IEC Telecom Norway

Hedmarksgata 13,
0658 Oslo,
NORWAY
T. +47 23 10 06 40
E. info-no@iec-telecom.com

IEC Telecom Turkey

Cevizli Mah. Mustafa Kemal Cad.
Hukukçular Towers A Blok No: 66A/39
34865 Kartal - Istanbul
TURKEY
T. +90(0) 216 970 16 08
E. info-tk@iec-telecom.com

IEC Telecom Singapore

627A Aljunied Road,
#08-05 BizTech Centre,
Singapore 389842
SINGAPORE
T. +65 6744 7925
E. info-sg@iec-telecom.com

TRAKSAT

11 Rue Galin
33100 Bordeaux
FRANCE
T. + 33(09) 54 49 95 01
E. info@traksat.eu

QUICKLINK

Technium 2, Kings road,
SWANSEA, WALES, SA1 8PJ, UK
T. +44(0)1792 720 880
E. sales@quicklink.tv

ADAPTIVE SATELLITE CONNECTIVITY AT SEA



SUMMARY

□ OUR MARITIME SOLUTIONS	P. 4
□ CRONOS - MANAGED MARITIME PLATFORM	P. 6
■ INSTALLATION & SUPPORT	P. 7
■ OPTICLOUD - VALUE ADDED SERVICES PLATFORM	P. 8
■ OPTIACCESS - DATA COMPRESSION & EMAILING SOFTWARE	P. 10
■ OPTISIM - BILLING & PROVISIONING PLATFORM	P. 12
■ XM REALITY - REMOTE GUIDANCE SOFTWARE	P. 14
■ MARITIME CONNECTIVITY - FLEET XPRESS & REGIONAL KU KA	P. 16
■ MARTIME MODEMS	P. 18
■ MARITIME HOTSPOTS & PHONES	P. 28
■ COMPARISON GUIDES: MODEMS, HOTSPOTS, HANDSETS	P. 32

IEC TELECOM - 20 YEARS EXPERTISE IN SATCOM SOLUTIONS

For more than 20 years now, IEC Telecom Group has been supplying high quality satellite-based technology providing clients with efficient end-to-end voice and data services, when and where, it matters most.

IEC Telecom Group is one of the leading global providers of managed network communication solutions. We offer a comprehensive suite of industry-standard and customized products, and value-added services, enabling a complete end-to-end solution for our customers. We believe our integrated approach of in-house design and engineering expertise provides a unique competitive advantage.

TURNKEY SOLUTIONS TO MEET WITH THE MOST CHALLENGING CONSTRAINTS

IEC Telecom has significant experience serving many different industries (Maritime, Energy, humanitarian, media, governments and public institutions) and offers a wide range of customized and industry-standard solutions.

We deliver systems and managed communications services anywhere in the world, under any conditions. From secure military applications to wireless networks and broadcast origination centres, our worldwide team gets the job done.

ADAPTIVE SATELLITE SOLUTIONS FOR DIGITAL SHIPS

IEC Telecom brings the experience and flexibility required to fulfil critical communication needs for all business models. We provide a full maritime service and solution portfolio for all segments: Bulk carriers, container ships, cargo, tankers, FPSOs, fishing vessels, cruise ships, yachting and leisure...

• NETWORK FLEXIBILITY

Our comprehensive VSAT portfolio enables us to meet all the needs and budgets of our clients. From deep sea fishing and big bulk carrier to leisure boats, from low speed data to high throughput connections, you can choose from a broad range

of packages, services and equipments to fit your needs. Our extensive global coverage in Ku, Ka, L band covers the worldwide shipping routes but also comes with regional options.

• COMMUNICATION BUDGET CONTROL

With competitive pricing from prepaid to unlimited options, control your network and optimize your traffic with CRONOS, to always keep your consumption under control and your budget on the line. Real-time analysis and reporting, onboard

resources management can optimize your business and your costs while preventing long stay at docks.

Maximize your onboard revenues with value-added services that can generate new revenues.

• CREW WELFARE

Improve your passengers, and crew wellbeing on board by giving them access to a high quality voice and data connection. Voice, emails, infotaining, web browsing, crew training or telemedicine are just a

few examples of services easily deployed on board and accessible using their own private devices on a dedicated channel.

• REMOTE MANAGEMENT & SUPPORT

Manage your allocations of crew credits while keeping a tight control over your accounts and get advanced online reporting on your network usage. Benefit from a permanent access to your Vessel

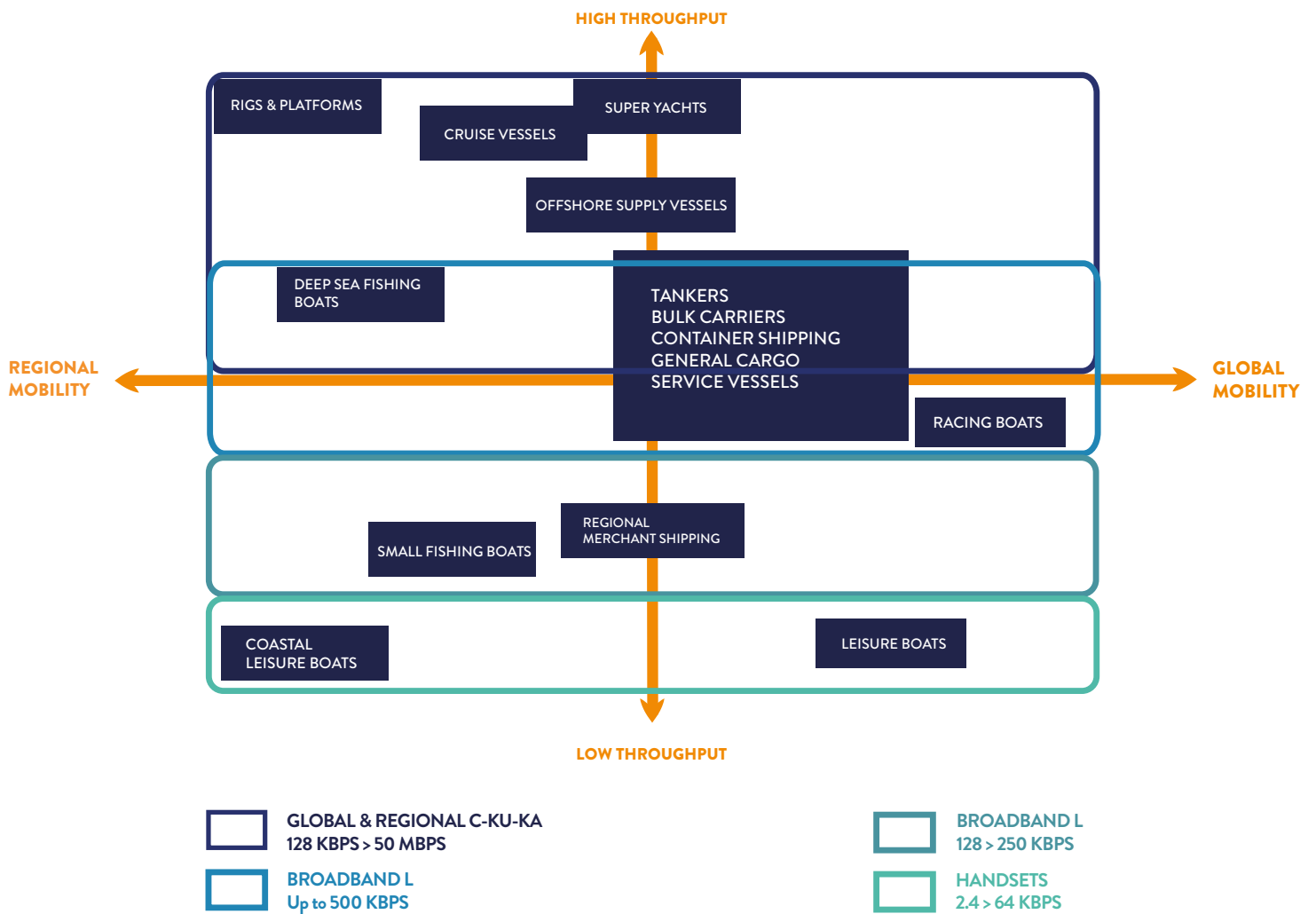
Management System with high throughput connections and regular updates on your vessel status with a 24/7 monitoring.



WHAT TYPE OF MANAGED COMMUNICATION DO YOU NEED?

What are your requirements in broadband connectivity? What services would you like to have on board? Which level of control do you want from onshore?

Let us evaluate your needs and design the perfect tailored solution to ensure you make the best critical business decision.



CRONOS

MANAGED COMMUNICATION AT SEA

VALUE-ADDED SERVICES INTEGRATED PLATFORM

Fully integrated platform to manage and optimize your on-shore and off-shore communications. Get the best services for you and your crew. Easily control your network while keeping your crew happy and your communications costs at bay.

MAIN FEATURES :

Firewall

- Stateful onship firewall
- Failover
- VPN*
- WAN Optimization
 - Unlike most of the competition, our box does not compress only web and doesn't degrade image quality
 - Full TCP optimization

WiFi Controller

- Multiple access points
- Multiple SSID
- Quality of service

LTE capabilities

- Integrated GSM/LTE solution to it's VSAT services
- Bandwidth bonding with seamless failover

Crew Management:

- Captive portal
- Prepaid voucher system shared across the fleet
- Revenue sharing possible
- Shore side web control center

*VPN transported traffic is not optimized

CRONOS



INSTALLATION

We are engaged with an unrivalled network of service & support partners to accompany you along the global shipping routes.



SUPPORT

IEC Telecom is committed to provide its customers not only with voice and data satellite connectivity but also with tailored services that ensure optimum use and control over their communications.

Our support team is dedicated to offer the best possible customer service to ensure the highest satisfaction level.

An exclusive set of 5 dedicated channels to contact us:

- Standard email support: support-global@iec-telecom.com
- Premium email support: upon request and accreditation
- Global 24/7 Hotline : +33(0) 1 70 36 32 32
- Satellite Short codes: **Iridium**: 5559 - **Inmarsat**: 75 **Thuraya**: 105
- **Whatsapp** Messaging address

A web admin portal with a Knowledge Base and a Ticketing System

2 levels of SLA agreements: Standard and Premium

VALUE-ADDED SERVICES PORTFOLIO



FILTERING & USAGE CONTROL

Satellite links are a valuable and rare resource which must be available when needed for mission critical applications. Unwanted usage can easily dominate a link and weaken the security of the network thus compromising its ability to fill its main purpose.

WHITE LIST

The most restrictive level; it involves a list of authorized websites. Every other browsing is unavailable. It can be used to only give access to corporate websites such as webmail or intranet.

SMART FILTERS

Smart filters are similar to white lists except that you can restrict certain categories of websites. IEC Telecom Group uses a technology whose editor is permanently updating and maintaining the list of websites and classifying their content. This is much more flexible than white lists because they evolve with accuracy, following the appearance of new websites. Example of websites categories that could be banned: adult material or offending content, video streaming (Youtube, Live TV...), etc...

APPLICATION FILTERS

The application filter uses Deep Packet Inspection (DPI) in order to protect managed desktops and servers by allowing or denying network application usage based on established policies.

- ✓ Intuitive graphic interface - easy to create filters
- ✓ Ban unwanted traffic and preserve usage of the bandwidth for critical applications
- ✓ Monitor and control your network/bandwidth usage
- ✓ Define and apply filtering on your terminal fleets seamlessly across networks
- ✓ Implement filters sets by sim or by projects (pool of sim cards)

From a cloud-based interface, ICT managers or site managers can apply customized filtering for a specific pool of devices and for one or several specific sites. Our solution enables administrators to apply (activate/deactivate) predefined filters autonomously, at any time from the web interface.



MONITORING & REPORTING

With the rise of social networking and recreational applications available online, your professional network might experience congestion and therefore preventing real work to be done and prioritized. It's only if you have visibility over your network activity that you can take actions to classify and prioritize business traffic.

- ✓ Receive a detailed qualitative content analysis to visualize and understand traffic activity
- ✓ Receive automatic monthly report per SIM card/ satellite-based line or per project (pool of SIM cards)
- ✓ Tailored usage reports can be created upon request
- ✓ Monitor your activity per SIM or per site and adjust rights and permissions if needed



INTERCONNECTION

Interconnect all your remote sites with your headquarter using IEC Telecom's infrastructure in order to secure your satellite-based telecommunications and ensure access to your critical applications.

- ✓ connect your remote sites to your head office
- ✓ securely access corporate applications from anywhere
- ✓ use software vpn or dedicated landline from iec telecom point of presence (pop - based in london)
- ✓ collect your traffic seamlessly across l-band or vsat gateways solutions



BANDWIDTH OPTIMIZATION

All IEC Telecom data airtime traffic going through our proprietary infrastructure is eligible to compression and acceleration. This technology has been specifically designed for satellite telecommunications and deals with the high latency that would normally prevent users from benefitting from the full potential of their links.

This optimization mechanism is significantly improving the end user experience by limiting the effects of latency on TCP applications (including video, browsing and even peer to peer traffic), but can also highly **reduce your airtime costs** or **increase usage time**.

Using our solution, you can also deploy **Link switching** (automatic traffic switching when a link is down), **bond modems** (aggregate 2 links bandwidths to increase your throughput) or **load balancing** (dispatch traffic on specific link).

- ✓ Improve overall user experience - Average bandwidth reduction = 30%
- ✓ Improve application responsiveness
- ✓ Compress, optimizes and caches your data traffic
- ✓ Fully transparent use of your usual applications
- ✓ Low TCO (Total Cost of Ownership) thanks to IEC Telecom hosted optimizers

OPTIACCESS

THE COMPLETE DATA COMPRESSION & EMAILING SOFTWARE

OptiACCESS is a data compression software that allows you access to the best web services everywhere: Emailing, Web browsing, Weather, Social Media & Blogging.



EASILY MANAGE YOUR EMAILS

OptiACCESS enables you to read and write your emails offline, saving on your data consumption.

Start your satellite connection when you need it and when you're done sending and receiving emails, your connection will automatically stop. If the connection stops without

warning, the system will start again and resume transmitting where it left off.

You have the choice! Use an email address created for you or simply use your usual address. OptiACCESS also works with Outlook, Apple Mail and any other messaging application.

SAVE UP TO 95% ON
YOUR BILLS

OPTIACCESS
ONLY GENERATES AN
AVERAGE OF 5% OF
THE DATA CREATED BY
A STANDARD EMAILING
SOFTWARE.



CHOOSE WHAT YOU WANT TO RECEIVE

OptiACCESS « BigMail » allows you to know when someone sends you a large file. The software will give you the subject and the email size so you can decide if you want to download it with your satellite connection, wait for

a better connection or simply delete it. OptiACCESS' server will scan all the messages and look for viruses or SPAM and block them before they can reach your inbox. A real saving on your data consumption!

AN OPTIMAL
COMPRESSION

OPTIACCESS
COMPRESSES UP TO
99% OF AN IMAGE SIZE
WITHOUT QUALITY LOSS



STAY CONNECTED EVERYWHERE

OptiACCESS makes web browsing easy with XWeb*. This web portal blocks ads, compresses texts and images, and deletes all wallpapers (too data consuming). Browse the web with loading time 3 to 5 times lower!

Share your experiences on social media and Sailblog* directly with OptiACCESS. A shortcut allows you to set up your accounts and post compressed images and texts via email.

* in option



Commercial Fleet



Leisure



Deep Sea Racing



Expeditions



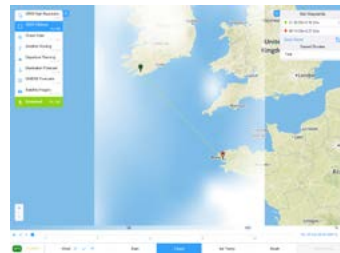
Remote exploitation sites



YOUR WEATHER FORECAST IN ONE CLICK

Weather file (GRIB) requests' applications are integrated within OptiACCESS allowing you to parameter, compress and receive by email multiple GRIB files for your trips.

An intuitive interface lets you visualize and directly select the information you need (itinerary, satellite images, weather forecast...)



FOR YOUR L BAND CONNECTIONS, IMPROVE OPTIACCESS' PERFORMANCES WITH THE OPTIMIZER

Easily connect your devices to the Optimizer (computers, smartphones, tablets etc...) thanks to the Wifi signal (or 3G/ 4G).

The Optimizer works with OptiACCESS to ease your access to your emails, web, weather files; social media platforms and even automatically

sends your GPS position to be geolocated.

A powerful firewall blocks all undesired connections to avoid unexpected data consumptions, leaving you the ability to configure your network's access to your preferred devices.

Works with all the following satellite equipment:

- Inmarsat: IsatPhone 2 , BGAN, FleetBroadband, FleetOne
- Iridium: 9555, 9575, Extreme PTT, Pilot
- Globalstar: GSP-1700, GSP-1600, GSP-2900
- Thuraya: XT-Pro, XT-Lite, XT-Pro Dual et IP+

Compatible with:

- Windows (XP, Vista, 7, 8) 32 & 64 bits
- Apple Macintosh, iOS
- Android



OPTISIM

CLOUD-BASED BILLING & PROVISIONING PLATFORM FOR ACCOUNT MANAGEMENT

It is a web-based solution which provides, via a secured (SSL) access, the ability for IEC Telecom customers to manage and monitor all their satellite lines (SIM cards, VSAT links or devices), call/consumption details and invoices, enabling an extensive follow-up of prepaid and post-paid accounts.

OptiSIM is constantly evolving to meet with customers' needs for an extended monitoring of their telecommunications activities.

OptiSIM is 24/7 accessible via a web browser with a unique login and password access and has 3 main functionalities:

PROVISIONING

ACCOUNT MANAGEMENT & FOLLOW UP

BILLING & INVOICING

ONE UNIQUE TOOL TO MANAGE ALL YOUR PROVISIONING NEEDS IN REAL TIME

OptiSIM allows any customers, once identified to access its satellite-based lines and to place orders for :

- SIM card or line activation
- Add prepaid credit on a specific or several lines
- Manage post-paid subscription plan (change plan, upgrade or downgrade)
- Line deactivation or suspension
- Line reactivation
- All customers' orders are stored and executed within the predefined SLA.

EXTENSIVE FOLLOW UP OF YOUR ACCOUNT TRAFFIC AND ACTIVITY

OptiSIM has been designed to provide a complete overview of telecommunications activities on the deployed fleet. Including information such as:

- Calls/ data session date and location for all devices
- Volume usage (data usage in Mb or Gb, in minute of in USD)
- Perform specific request on traffic report
- Rename and edit account devices (SIM cards or lines) to make invoicing clearer when customers manage multiple accounts or lines.
- Create consumption alerts and receive notification when threshold is exceeded (in Mb, minutes and/or USD)

Example: create a low balance or expiration alert and receive a notification when a SIM card needs to be recharged.

EASY BILLING AND INVOICING MANAGEMENT

OptiSIM collates and aggregates all call details and automatically stores and delivers monthly invoices in PDF or Excel formats to an established list of recipients.

For billing purpose, customers can use OptiSIM to:

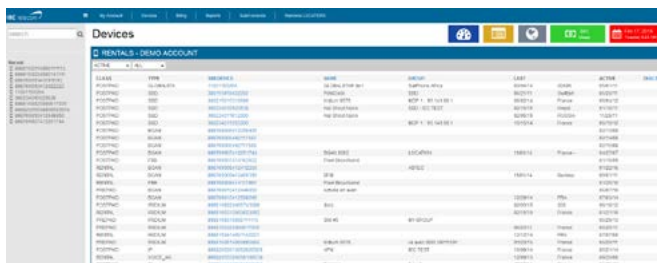
- Manage their invoice currency, available in €, USD, AED, SGD, NOC, ZKT, SEK – Multi-currency tool
- Consult and export past invoices when needed (unlimited invoices history)
- Receive and consult all lines details for all consumption (ahead of invoicing creation)
- OptiSIM is the ideal tool to actively monitor and manage telecommunications, integrate invoices into their account system and carefully follow up and manage their spendings.

EXTENDED ACTIVITY REPORTING TO ADAPT/ADJUST YOUR OPTIONS

Gathering all details and information about any satellite line provided by IEC Telecom, OptiSIM enables users to make specific requests to the database. These requests can be based on various criteria such as:

- Date
- Network
- Call type (voice or data)
- Etc...

Therefore a customer can get a complete snapshot of all their SIM cards or lines activity for a specific period of time of their choice (can be per day, month or year basis).



ID	IMEI	MSISDN	Network	Country	City	Status
100000000000000	352011000000000	900000000000000	35201	Spain	Madrid	Active
100000000000000	352011000000000	900000000000000	35201	Spain	Madrid	Active
100000000000000	352011000000000	900000000000000	35201	Spain	Madrid	Active
100000000000000	352011000000000	900000000000000	35201	Spain	Madrid	Active
100000000000000	352011000000000	900000000000000	35201	Spain	Madrid	Active
100000000000000	352011000000000	900000000000000	35201	Spain	Madrid	Active
100000000000000	352011000000000	900000000000000	35201	Spain	Madrid	Active
100000000000000	352011000000000	900000000000000	35201	Spain	Madrid	Active
100000000000000	352011000000000	900000000000000	35201	Spain	Madrid	Active
100000000000000	352011000000000	900000000000000	35201	Spain	Madrid	Active

EASY & EFFICIENT ACCOUNT MANAGEMENT TOOL:

access your data 24/7

WHEREVER YOU ARE TRAFFIC MONITORING:

complete logs information for both prepaid and postpaid accounts

USAGE & REPORTING:

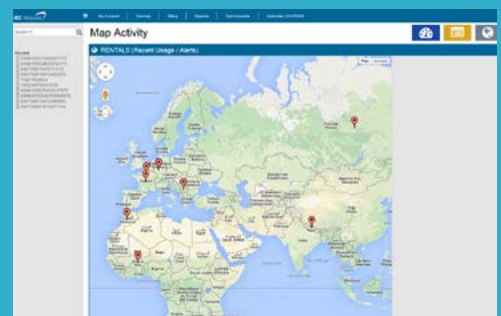
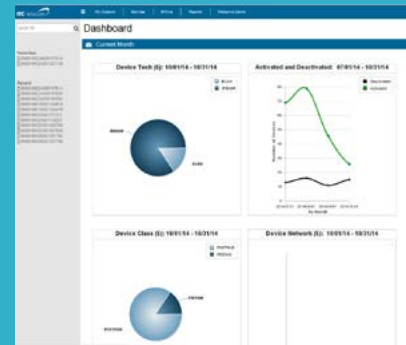
access and download account and billing history according to various search criteria.

PREPAID ACCOUNT:

order, activate and recharge. Check account balances and call details.

CONSUMPTION LIMITS & ALERTS:

set specific limits for a device(s) or groups of postpaid SIM cards and receive email notification when limit is reached. Staying connected anywhere



REMOTE
GUIDANCE
SERVICE



Revolutionize knowledge sharing &
Create world-class services with
XMREALITY REMOTE GUIDANCE™

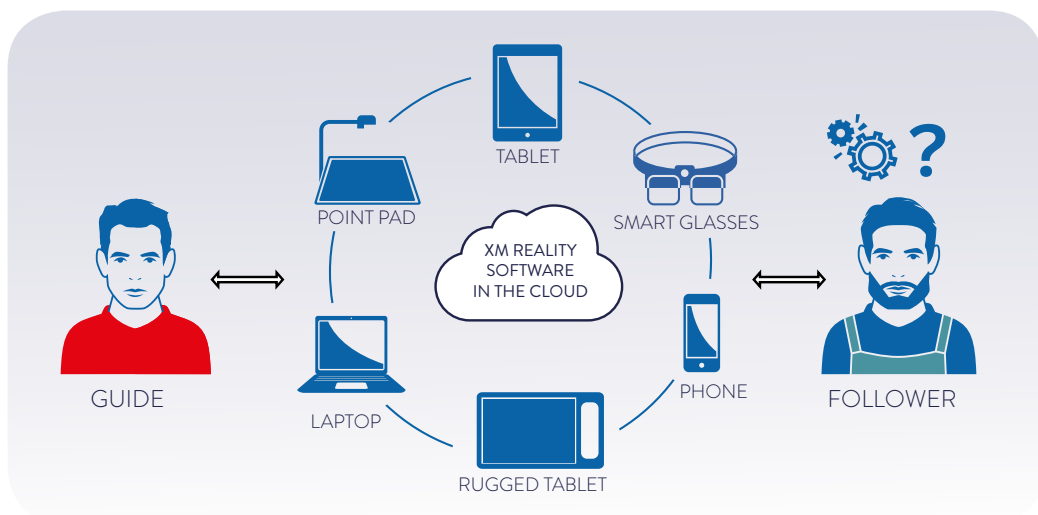




XMREALITY IS A SOFTWARE THAT OFFERS A WAY TO COLLABORATE BEYOND MOBILE TELEPHONY AND VIDEO CONFERENCING.

By combining innovative software, smart glasses and mobile communication technology with robust augmented reality, we allow users to get audiovisual guidance from remote experts.

Everything the remote expert shows or points at, appears in the local engineer's field of vision. It's as if the expert were standing right beside you.



KEY BENEFITS

XMReality offers huge **savings in time and money**, but even more important, equipment and plant availability will be significantly improved. Aftermarket service can be performed quicker and with higher quality, supported by **new service offerings** and close collaboration between manufacturer and clients. Field service organizations will benefit from reduced costs, **improved efficiency and knowledge sharing** between team members. XMReality offers a unique **real-time mobile communication solution** that is easy to deploy for a large amount of users.

- Improved equipment availability and performance by minimizing downtime.

- Offers huge cost reduction in field service due to savings in less traveling.
- Competitive service offering and service level agreement (SLA).
- Increased “first-time-fix” rate.
- Offers new possibilities to optimize personnel allocation.
- Improved knowledge sharing in the field service organization.
- Overcome plant access limitations (physical, security or safety restrictions).
- Prevent failure by predictive maintenance and Remote Guidance.
- Perform inspections and calibrations remotely.

THE NEW STANDARD IN MARITIME COMMUNICATIONS

INMARSAT FLEET XPRESS



DELIVERING GREATER BANDWIDTH, SEAMLESS MOBILITY AND OUTSTANDING RELIABILITY WHEREVER YOU OPERATE IN THE WORLD

Every Fleet Xpress solution uses both a **Global Xpress Ka-band** and a **FleetBroadband L-band** terminal, delivering high data speeds in a reliable, and fully integrated turnkey solution.

Run your business more efficiently with a scalable, high performance, plug and play service:

- High-speed broadband for internet access
- Affordable voice calls and strong data connection
- Fully Managed services
- Multiple voice options for crew and operations
- 24/7 online support, remotely and physically on-board by certified engineers
- A variety of flexible data plans

A FULLY MANAGED AND REDUNDANT SERVICE

- Onboard terminals automatically connects to each GX beams as part of the Fleet Xpress fully managed service, ensuring our clients a **continuous and seamless service**
- The proven reliability of the FleetBroadband secures the **high-speed network connection redundancy** in the event of terminal failure, shadow, or if the FX is out of coverage
- Remote fault and configuration management of the remote terminal, over a dedicated management network

With permanent and unlimited access to the Vessel IP network, Maritime companies can **implement Vessel Management Software** with advance features. It also brings a secured access to all required information on board and the possibility to **implement new generation applications:**

- Real-time video and audio streaming
- VoIP support and managed VoIP service
- Video teleconferencing
- Branch office applications (eg VPN access, SAP, Citrix, email)
- Real-time interactive collaboration
- High-speed file transfer (FTP)
- Video surveillance
- Telemedicine



CONTINUOUS
CONNECTIVITY



GUARANTEED
PERFORMANCE



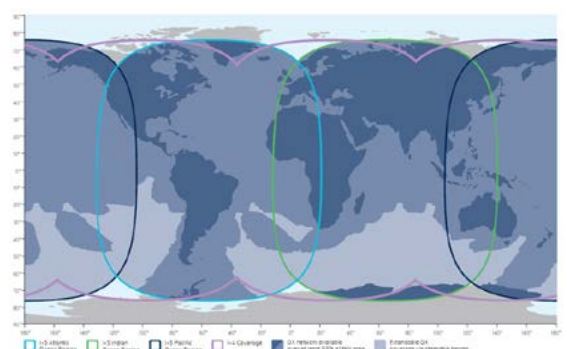
CONTROLLED
COSTS



FULLY MANAGED
SERVICE



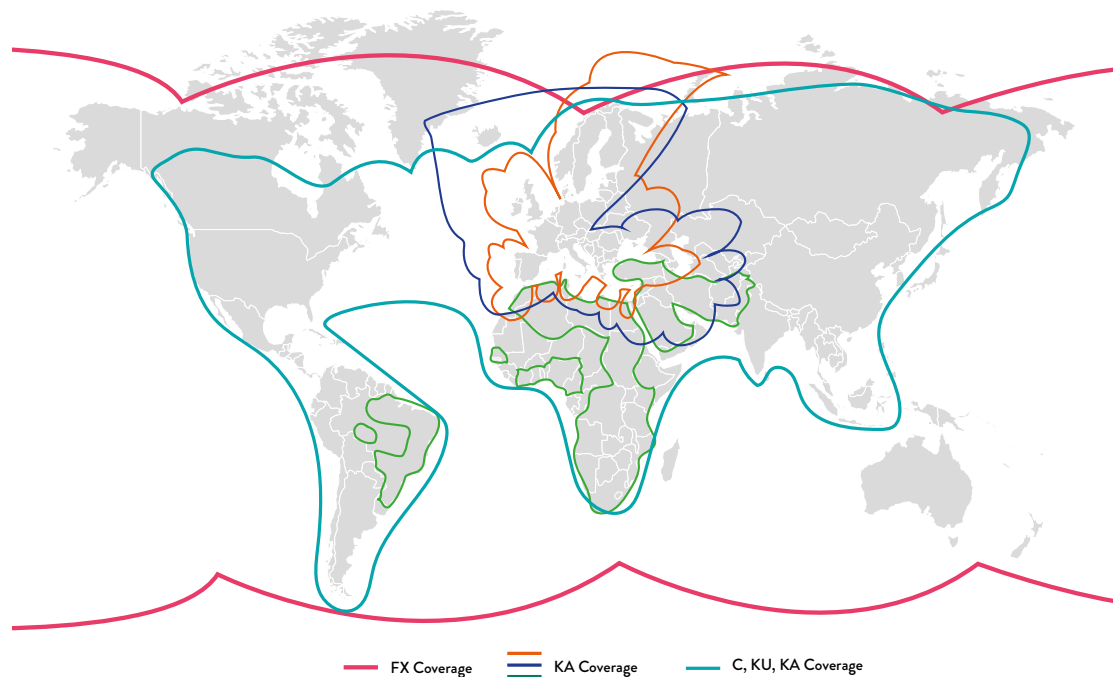
BUSINESS
APPLICATIONS



ADAPTIVE CONNECTIVITY

REGIONAL KA-KU HIGH THROUGHPUT SATELLITE CONNECTIVITY

Our ADAPTIVE Regional & other Global KU- KA and C services are a result of our experience in building “Taylor made” and “Haute couture” solutions with multi-band VSAT services, backed by our expert customer support network.



Our Regional Ka & Ku-band VSAT portfolio comprises Telenor THOR 7 & iDirect, proposing a coverage throughout the Nordic region, Europe and the Middle East.

THOR 7 utilizes relatively small spot beams, providing unprecedented high-power performance for maritime applications.

- High throughput Ka-band satellite
- Wide range of cost effective broadband services on 60cm and 1m antennas
- Service profiles up to 24/6 Mbps
- For use on ferries, cruise, regional shipping, superyachts & fishing vessels

Ka Global Coverage



Ku Atlantic Coverage



COBHAM SAILOR 100 GX

FLEET XPRESS MARITIME TERMINAL

The SAILOR 100 GX is a robust, 3-axis marine stabilized antenna system designed specifically for the Inmarsat Global Xpress satellite network. It ensures high speed maritime broadband access wherever you are at sea, and enables to use business critical applications or provides communications to the crew. SAILOR 100 GX features advanced Tracking Receiver technology that enables to verify the right satellite in less than a second. This unique feature ensures quick satellite acquisition at start-up and re-acquisition of the satellite in case of temporary blockage, after bad weather or poor signal strength.

Easy to install and set up, it can be commissioned even by a non-specialist technician. SAILOR 100 GX ships with the original SAILOR GX Modem Unit (GMU), which works directly with SAILOR 500/250 FleetBroadband to form the cornerstone of the Inmarsat Fleet Xpress service.



THE FLEXIBLE GLOBAL CONNECTIVITY
AND VOICE SOLUTION



INTELLIAN GX 100

FLEET XPRESS MARITIME TERMINAL

Intellian and Inmarsat have partnered to deliver a high speed connectivity solution as easy to adopt as Fleet Broadband. Easy, standardized equipment. Single global network. Intuitive User Interface. The Intellian GX100 features a built in GX modem for simplified installation and reduced overall space requirements. Wi-Fi enabled for wireless management via Intellian's Aptus PC or Mobile remote management application. Built in 8 Port Ethernet Switch provides VLAN capability, all in a single, 19" rack type 1U case. Integrated AC Power Supply (no additional components needed) and front panel touch display with easy navigation buttons. All Intellian systems feature an Intellian LAN function, enabling all onboard devices to be easily networked out of the box with no additional hardware. For the ultimate in service reliability, or for out of band management solutions, the GX Series easily integrates with Intellian's FB250 or 500 terminals



COBHAM SAILOR 60 GX



KA-BAND MARITIME SYSTEM FOR INMARSAT GLOBAL XPRESS

The SAILOR 60 GX is a robust, 3-axis marine stabilized antenna system designed specifically for the Inmarsat Global Xpress satellite network. It ensures high speed maritime broadband access wherever you are at sea, and enables to use business critical applications or provides communications to the crew. With collaboration and IP applications becoming increasingly important to improving vessel and fleet efficiency, SAILOR 60 GX can be counted on to enable your ability to communicate and operate more efficiently.

Easy to install and set up, it can be commissioned even by a non-specialist technician. SAILOR 60 GX is designed to meet some of the toughest shock and vibration specifications, including IEC EN 60945. It is also ready for seamless dual antenna installations for those ships that may experience excessive blockage zones.



INTELLIAN GX 60

FLEET XPRESS MARITIME TERMINAL

Intellian and Inmarsat have partnered to deliver a high speed connectivity solution as easy to adopt as Fleet Broadband. Easy, standardized equipment. Single global network. Intuitive User Interface. The Intellian GX60 features a built in GX modem for simplified installation and reduced overall space requirements. Wi-Fi enabled for wireless management via Intellian's Aptus PC or Mobile remote management application. Built in 8 Port Ethernet Switch provides VLAN capability, all in a single, 19" rack type 1U case. Integrated AC Power Supply (no additional components needed) and front panel touch display with easy navigation buttons. All Intellian systems feature an Intellian LAN function, enabling all onboard devices to be easily networked out of the box with no additional hardware. For the ultimate in service reliability, or for out of band management solutions, the GX Series easily integrates with Intellian's FB250 or 500 terminals



SKYTECH BB110 KU&KA

THE NEW MULTI-BAND ANTENNA FOR HIGH THROUGHPUT CONNECTIVITY



The all-new BB110 multi-band Ku/Ka benefits from a dual-band technology ready for High Throughput Satellites as well as wider coverage beams. Engineered around extensive sea trials, the BB110Ku/Ka benefits from an innovative switching technology, allowing quick and automated commuting among available satellites globally. An intuitive screen app manages network preferences, coverage areas and security features.

This elegant solution allows for a truly multi-band and multi-technology antenna, able to work in all Ku band modes, and compatible with the most widespread Ka-band technologies. The antenna is thus able to seamlessly roam between different geographical coverage areas, between Ku and Ka-band, and between different technologies and providers in Ka-band. One of the two Ka-band payloads can be optionally be equipped with military band compatible equipment.

HIGH THROUGHPUT BROADBAND CONNECTIVITY

MORE INFORMATIONS:

iec-telecom.com

CHARACTERISTICS

- **Reflector:**
110cm ADE carbon fibre
- **Ku-Band:**
TX: 13.75-14.5GHz, Gain 42.4dB @14.5GHz (w/o dome)
RX: 10.7-12.7GHz, Gain 41.3dB @12.7GHz (w/o dome)
G/T: 18 dB/K @ 30° elevation
Linear polarization w/ rotating skew
Co-polar filter+LNB (optional)
BUC type: 6W or 8W JRC
LNB low noise figure: <0.6dB NF Swedish Microwave Quad band
- **Ka-Band port #1:**
TX band: 29.5-30.0 GHz
RX band: 19.7-20.2 GHz
BUC/LNB type: 3W mTRIA (Viasat)
- **Ka-Band port #2:**
TX: 29.5-30.0 GHz or 30-31 GHz with optional military band payload

- RX: 19.7-20.2 GHz or 20.2-21.2 GHz with optional military band payload
BUC type: 5W NJRC (OpenBMIP) or optional militaryband BUC
LNB: NJRC Ka-band 1.3 dB NF or optional military band LNB
- **Radome size:**
142 cm(D) x142 cm(H)
- **Antenna weight:**
75Kg (incl. radome, KU and KA band BUC)
- **Band selection:**
S/W electronic/mechanical selector with rotating RF assembly
- **Internal 3-axis gyro sensor:**
9 sensors with Kalman filter
- **Tracking possibilities:**
Geostationary satellites & Inclined orbit satellites
- **Out-of-band management:**
Wifi, 3G/4G/LTE module (optional)

- **Standards:**
FCC 25.222, 25.138, Telenor, Eutelsat EESS502 (in progress)
IEC60945, MIL-STD-810F, MIL-STD-167

INTERFACES

Gyro RS422/NMEA, Ethernet, Bluetooth

SKYTECH

BB75 KA



THE EASY WAY TO COMMUNICATE AT SEA

Newly designed for maritime Ka-band users requiring high-speed connections and large bandwidth: yachts, passenger ferries, Oil & Gas, commercial and support vessels. The antenna comes in a compact design of only 37 kg of weight, equipped with a 3-axis rigid mechanical structure. BB75 Ka-Band offers agile and superior tracking performances in combination with an improved software and high precision inertial sensor, excluding the need for external gyro.

DESIGNED FOR HIGH SPEED CONNECTIONS

CHARACTERISTICS

- Reflector: 0.75 meters (29.5 inches) diameter ADE carbon fibre
- Ka-band: TX: 29.5-30.0 GHz, RX: 19.7-20.2 GHz LHCP/RHCP Circular polarization
- Max EIRP: 51 dBW (with 5 W JRC BUC), dome included
- G/T: 17 dB/K @20° elevation (typical), dome included
- Antenna weight: 37 kg
- Dome diameter: 0.96 meters (37.8 inches)

- Internal 3-axis gyro sensor: 9 sensors with Kalman filter and GPS based 3D position fusion algorithm
- Tracking possibilities: Geostationary satellites & Inclined orbit satellites
- Wi-Fi and 3G/4G/LTE module (optional): Supports 2.4 GHz Wi-Fi with diversity antenna Supports 2G GSM, 3G UMTS quad-band, 4G LTE
- Standards: Telenor, IEC60945 for professional maritime equipment of satellite configurations

This terminal can be also available in rugged version for heavy duty law enforcement usage fully responding to: MIL-STD-901, MIL-STD-167, MIL-STD-461



SKYTECH

BB50 KA

ULTRA SMALL KA-BAND ANTENNA

This KA band antenna is design for users that could not install an heavy standard Vsat system. This new technological gem produced mainly in carbon fiber at high resistance and precision is now finally available and has a footprint of only 50 cm. weights only 23Kg, and has been designed based on the aerospace and military state of the art guaranteeing always at least 20Mb download and at least 1Mb upload while surfing even at 50 knots also under very rough sea.

SMALL , EASY TO INSTALL & PERFORMANT

CHARACTERISTICS

- Reflector: 50 cm diameter ADE carbon fiber
- Ka-band: TX: 29.5-30.0 GHz, RX: 19.7-20.2 GHz LHCP/RHCP Circular polarization
- G/T: 13.5 dB/K @20° elevation (typical), dome included

- Dome size: Diameter: 57 cm
- Height: 60 cm
- Antenna weight: < 23 Kg dome included
- Wi-Fi and 3G/4G/LTE module (optional): Supports 2.4 GHz Wi-Fi with diversity antenna Supports 2G GSM, 3G UMTS quad-band, 4G LTE

- Standards: Telenor (certification in progress) IEC60945 for professional maritime equipment of satellite configurations

INMARSAT FLEETBROADBAND SAILOR 500



THE LATEST-GENERATION MARITIME COMMUNICATION SYSTEM

The SAILOR 500 FleetBroadband is designed for vessels and platforms with demanding requirements for connectivity. It meets with the critical need for voice and data access of maritime and offshore professionals. It provides extensive functionalities including access to bandwidth-hungry IP applications, broadband Internet/ Intranet, e-mail, secure VPN and 9 simultaneous voice lines. SAILOR 500 FleetBroadband is easy to deploy and connect and provides an intuitive user-interface through a 2.2" TFT colour screen.

This is the most ideal solution to get access to a state-of-art maritime communication system.

HIGH THROUGHPUT BROADBAND CONNECTIVITY

MORE INFORMATION:

iec-telecom.com

CHARACTERISTICS

- Below-deck Unit (BDU) Dimensions: 273 x 264.5 x 42.5 mm
- BDU weight: 2.5 kg
- Above-Deck Unit Dimensions (Antenna): 687 mm wide x 797.5 mm high
- Antenna Weight: 23 kg
- User interfaces: DC heavy duty power input connector with Remote on/off and locking mechanism; status LEDs
- Standard IP:
- Send up to 432 kbps over a shared channel
- Receive up to 432 kbps over a shared channel
- Streaming IP: Guaranteed Quality of Service: 8, 16, 32, 64, 128, 176 or 256 kbps

- SMS 160 characters supported
- Voice: 4 kbps, 3.1 kHz audio
- Fax
- Wind: 100 knots
- Ingress Protection:
- IP31 (BDU)
- IPX6 (ADU)

INTERFACES

- 4 x Ethernet LAN users ports with PoE
- 2 x RJ-11 phone 2-wire connectors
- 1 x ISDN port
- 5 I/O connectors

INCLUDED IN THE PACK

- SAILOR 500 FleetBroadband Above Deck Unit

- SAILOR 500 FleetBroadband Below Deck Unit
- Sailor IP handset with Cradle
- Cabling: antenna cable (30 m)
- DC power Cable
- Manual and driver on CD-ROM

INMARSAT FLEETBROADBAND FX 250



THE EASY WAY TO COMMUNICATE AT SEA

The SAILOR 250 FleetBroadband is designed for small to medium size vessels and platforms with demanding requirements for connectivity. It meets with the critical need for voice and data access of maritime and offshore professionals. Well suited for harsh maritime environment it delivers simultaneous voice and data to multiple users onboard and enable users to run online operational systems such as remote monitoring. With data speeds up to 284 kbps and a simple antenna to install, the SAILOR 250 is the perfect balance between performance and price.

DESIGNED FOR MARITIME COMMUNICATION

CHARACTERISTICS

- Below-deck Unit (BDU) Dimensions: 273 x 264.5 x 42.5 mm
- BDU weight: 2.5 kg
- Above-Deck Unit Dimensions (Antenna): 275.6 mm wide x 329.2 mm high
- Antenna Weight: 4.2 kg
- User interfaces: DC heavy duty power input connector with Remote on/off and locking mechanism; status LEDs
- Standard IP:

- Send up to 284 kbps over a shared channel
- Receive up to 284 kbps over a shared channel
- Streaming IP: Guaranteed Quality of Service: 8, 16, 32, 64 or 128 kbps
- SMS 160 characters supported
- Voice: 4 kbps, 3.1 kHz audio
- Fax
- Wind: 100 knots
- Ingress Protection:
- IP31 (BDU)
- IPX6 (ADU)

INTERFACES

- 4 x Ethernet LAN users ports with PoE
- 2 x RJ-11 phone 2-wire connectors
- 5 I/O connectors

INCLUDED IN THE PACK

- SAILOR 250 FleetBroadband Above Deck Unit
- SAILOR 250 FleetBroadband Below Deck Unit
- Sailor IP handset with Cradle
- Cabling: antenna cable (25 m)
- DC power Cable
- User and installation manuals



INMARSAT FLEETBROADBAND SAILOR 150

DESIGNED FOR MARITIME COMMUNICATIONS

The SAILOR 150 FleetBroadband is the smallest, lightest FleetBroadband antenna. It is the ideal solution for small vessels or yachts requiring for a stable and reliable high quality satellite internet access and voice communications. SAILOR 150 FleetBroadband combines internet connectivity with simultaneous voice calling and is the perfect blend for single users and general IP applications. It can be used for dedicated tracking and telemetry applications and helps to enhance efficiency onboard anywhere on earth.

THE FLEXIBLE GLOBAL CONNECTIVITY AND VOICE SOLUTION

CHARACTERISTICS

- Below-deck Unit (BDU) Dimensions: 278 x 231 x 41 mm
- BDU weight: 2 kg
- Above-Deck Unit Dimensions (Antenna): 275.6 mm wide x 291.9 mm high
- Antenna Weight: 3.9 kg
- User interfaces: DC heavy duty power input connector with Remote on/off and locking mechanism; power LED

- Standard IP:
- Send up to 150 kbps over a shared channel
- Receive up to 150 kbps over a shared channel
- SMS 160 characters supported
- Voice: 4 kbps, 3.1 kHz audio
- Wind: 100 knots
- Ingress Protection:
- IP31 (BDU)
- IPX6 (ADU)

INTERFACES

- 4 x Ethernet LAN users ports with PoE
- 1 x RJ-11 phone 2-wire connectors
- I/O Interface

INCLUDED IN THE PACK

- SAILOR 150 FleetBroadband Above Deck Unit
- SAILOR 150 FleetBroadband Below Deck Unit
- SAILOR IP handset with Cradle
- Cabling: antenna cable (10 m)
- Power Cable
- User and installation manuals

INMARSAT FLEET ONE



MARITIME COMMUNICATION SYSTEM DESIGNED FOR SMALL AND MEDIUM VESSELS

Fleet One is the latest Inmarsat innovation, designed to provide reliable and secure telecommunications at sea. The new service has been designed to meet the particular communications needs of leisure mariners, day boaters and sport and coastal fisherman, providing uninterrupted, near-shore voice and data connectivity. Fleet One provides a very cost effective and competitive pricing for users to: access Internet, write emails and make phone calls when cellular network is not available or unstable. Fleet One has a standard 'Plug and play' Ethernet connection to a computer and can support multiple smart phones, tablets and computer via an optional WiFi router. Easy to install and maintain, the Fleet One enables users to connect all around the world at sea, avoiding roaming charges and unforeseen bills.

COASTAL BROADBAND CONNECTIVITY

CHARACTERISTICS

- Below-Deck Unit (BDU) Dimensions: 278 x 264 x 41 mm
- BDU weight: 2 kg
- Above-Deck Unit Dimensions (Antenna): 257.6 mm x 291.9 mm
- Antenna Weight: 3.9 kg
- Standard IP:
- Send and receive up to 100 kbps
- SMS 160 characters supported
- Voice: 4 kbps
- Wind: max 100 knots
- Ingress Protection:
- IP30 (BDU)
- IPX6 (Antenna)

INTERFACES

- 2 x Ethernet LAN users ports with PoE
- 1 x RJ-11 phone /fax 2-wire connectors
- 1 x I/O connector with 5 configurable inputs/outputs
- LED power indicator
- Integral DHCP/NAT router
- Built-in PBX

iFLEET ONE WIDEYE

Also available for the Fleet service, the iFleet One with built-in Wi-Fi for wireless mobility and smartphone applications accessibility.





IRIDIUM PILOT

PERFORMANCE AND DURABILITY AT SEA

The Iridium Pilot is designed to meet the specific needs of the maritime industry for reliable communications at sea. Easy to install its delivers up to 3 phone lines for simultaneous use and features always-on data access with a speed up to 134 kbps on all-IP backbone.

The Iridium Pilot is designed to handle any wether conditions and provides communications anywhere on earth.

BUILT TO PERFORM IN THE THOUGHTEST CONDITIONS

CHARACTERISTICS

- Below-Deck Unit (BDU) Dimensions: 250 x 200 x 55 mm
- BDU weight: 1.35 kg
- Temperature -0° to +50° C (32° to 122° F)
- Abode-Deck Unit Dimensions (Antenna): 570 mm wide x 230 mm high
- Antenna Weight: 11 kg
- Temperature -30° to +70° C (-22° to 158° F)
- Ingress Protection: IP 66 Compliant (Powerful water jets from any direction)
- Standard IP with Iridium OpenPort

broadband service:

- Send up to 134 kbps over a shared channel
- Receive up to 134 kbps over a shared channel
- Voice

INTERFACES

- 1 x Ethernet
- 3 x RJ-11 phone 2-wire connectors

INCLUDED IN THE PACK

- Iridium Pilot Abode Deck Unit (antenna)

- Iridium Pilot Below Deck Unit (BDU)
- BDU power supply and mounting bracket
- Captain handset
- Crew handset
- Cabling:
- EU power supply and mounting bracket
- Antenna Cable (available in 20 or 50 m)
- User guide and installation manual



THURAYA ORION IP



EFFECTIVE AND RELIABLE CONNECTIVITY SPECIALY DESIGNED FOR HARSCH MARITIME ENVIRONMENT

The Thuraya Orion IP is a L-Band Broadband terminal dedicated to maritime users willing to benefit from an enhanced experience at sea.

Providing data connectivity at rates up to 444 kbps, Thuraya Orion IP is based on high quality components and available through state of the art Thuraya network. It provides to maritime users (merchant, fishing, governmental, leisure usages...) with competitive and adapted pricing and participate in minimizing expenditure while maximizing operational effectiveness.

ENHANCED EXPERIENCE AT SEA

CHARACTERISTICS

- Data rate(s):
- Standard IP up to 444 kbps
- Streaming IP: 16, 32, 64, 128, 256 or 384 kbps
- Size of above decks unit (ADU): 265 mm x 270 mm
- Weight of ADU: 3 kg
- Ethernet: Four PoE ports supplying 15W each to four PoE compliant devices
- Autonomous beam handover: Yes
- Wi-Fi Access Point: Yes
- Input Voltage: 10-31 volts DC - 70W max (7A max)
- Coaxial cable loss: 10dB max

INTERFACES

- Email
- Video conferencing
- Chart updates
- Remote IT Support
- Vessel Tracking
- Condition-based monitoring
- Crew welfare



THURAYA SEASTAR



UNRIVALED FUNCTIONNALITIES: THE NEW MARITIME TERMINAL COMBINING VOICE AND DATA.

Thuraya SeaStar is a circuit switched voice terminal that meets the needs of the modern fishing market. Conforming to IEC 60945 requirements, Thuraya SeaStar offers voice, SMS, Data and tracking, on an easy and intuitive interface. Users can make satellite voice calls to normal PSTN phones, mobile phones and other satellite phones through the Thuraya satellite network. Thuraya SeaStar can also have a standard analogue phone plugged into it as an extension.

COMPETITIVE PRICING, ECONOMICAL & POWERFUL,

CHARACTERISTICS

- SMS: up to 160 characters
- GmPRS: 60Kbps/15Kbps(Download/Upload)

GPS Specifications:

- Number of tracking channels : 20
- GPS Position Accuracy : <10m

Antenna Unit (ADU)

- Operating temperature : -25 to +55°C
- Storage temperature: -40 to +80°C

Base Terminal (BDU):

- Operating temperature : -15 to +55°C
- Storage temperature: -20 to +70°C

System:

- Power Supply: 10.8 to 31.2V
- Standby/Working average power consumption: 10W/16W

- Operating Humidity: up to 95% at 40°C

Size:

- Base terminal : 210x205x85mm
- Activate antenna: 164x170mm
- SAT and GPS cable: 25m

Weight:

- Base terminal: 1.2kg
- Activate antenna: 1.1kg
- Antenna Mounting Kit: 0.5kg
- SAT Feeder line: 0.67kg
- GPS Feeder line: 0.67kg

EXTERNAL INTERFACES

- Mini USB port
- Alert button
- External speaker connection
- RJ 45 Lan port

INCLUDED IN THE PACK

- Antenna
- Terminal
- Cables, 25m
- Mounting Kit



IRIDIUM GO !

YOUR SMARTPHONE CONNECTED ANYTIME ANYWHERE!

Iridium GO! creates the first ever reliable global connection for voice and data communications on your smartphone or up to 5 mobile devices.

No roaming charges. Just connect yourself, whenever you need, with the device you rely on everyday.

Iridium GO! dramatically extends the capabilities of any smartphone, laptop or tablet by creating a satellite-backed Wi-Fi hotspot anywhere on the planet.

Simply flip up the integrated antenna and the battery-powered unit connects quickly and automatically to the Iridium LEO satellite constellation.

PORTABLE SATELLITE-BASED HOTSPOT

FEATURES

- Connect through Iridium Apps available for iPhone and Android smartphones
- Initiate voice call
- Send Twitter posts
- Set up Wi-Fi data call
- Activate Emergency SOS
- Draft and view emails offline
- Configure email size to deduce connection time
- Queue-up emails to be sent up to 15x faster than web-based services
- Retrieve emails from external accounts

- Block pop ups, remove ads and background images
- Compress web pages for download speeds of 3 - 5 x faster than uncompressed pages

CHARACTERISTICS

Dimensions: 11.43 x 8.3 x 3.2 cm

Durability Specifications:

- Military-grade ruggedness (MILSTD810F)
 - Ingress Protection: IP65
- Easy to Use:
- Stable, lay-flat design
 - Flip up antenna

- Built-in menu/status display
- Flexible:

- Wi-Fi device ready
- App API for developers
- Robust accessory platform

IRIDIUM 9555

MARITIME
SATELLITE
PHONES

THE SMALLEST AND MOST POWERFUL IRIDIUM PHONE

The Iridium 9555 provides reliable connectivity from anywhere and can handle any environment: from baking desert to frozen ice parks! Iridium 9555 is ruggedly built and present more hand-friendly form and aerodynamic features such as an internally stowed antenna. It incorporates innovations such as integrated speakerphone, improved SMS and email messaging capabilities and an upgraded Mini-USB data port. It continues the evolution of satellite phones, making communication more efficient and effective for users.



THE MOST RELIABLE SERVICE IN REMOTE AREAS

CHARACTERISTICS

- Dimensions: 143 x 55 x 30mm
- Weight: 266g
- Battery Stand by Time: Up to 30 hours
- Battery Talk Time: Up to 4 hours
- Data: Up to 13 kbps
- Voice: 2.4 kbps
- Integrated speakerphone
- Headset and hand-free capability
- 200 character illuminated graphic display
- Volume, Signal and battery strength meters
- Illuminated weather-resistant keypad
- Integrated speakerphone

- Quick-connect to Iridium voicemail
- Two-way SMS and short email capability
- Pre-programmable International Access Code (00 or +)
- Mailbox for voice, numeric and text messages
- Selectable ring and alert tones (8 choices)
- Weight: 266g

INTERFACES

- USB interface
- Mini USB data port

INCLUDED IN THE PACK

- Iridium 9555 handheld
- AC charger
- International plug kit
- DC travel charger
- USB data cable
- Auxiliary antenna adapter
- 5' External auxiliary antenna
- Hands-free headset
- Leather case
- Quick start guide, user guide on CD

IRIDIUM 9575

IRIDIUM EXTREME: MORE FEATURES THAN ANY OTHER HANDSET

Iridium Extreme is engineered with more features than ever before and with more accessories than any other satellite phone on the market. Providing a continuous connectivity all around the world, it provides to users with many advanced features: customizable GPS and location-based services, online tracking, emergency SOS notification, etc...



LOCATION BASED SERVICES INTEGRATED INTO A SATELLITE PHONE.

CHARACTERISTICS

- Dimensions: 140 x 60 x 27 mm
- Weight: 247g
- Battery life Standby time: Up to 30 hours
- Battery life Talk Time: Up to 4 hours
- Display: 200 characters illuminated graphic display
- Volume, signal and battery strength meters
- Integrated speakerphone
- Quick-connect to Iridium voicemail
- Two-way SMS and short email capability
- Pre-programmable International Access code (00 or +)
- Mailbox for voice, numeric and text messages
- Military-grade ruggedness

- Ingress Protection: IP65
- Call history retains received, missed and dialed calls
- User-configurable call timers to manage costs
- Keypad lock and PIN lock for additional security

INCLUDED IN THE PACK

- Iridium Extreme handheld
- Travel charger with international adapters
- Car Charger
- USB Data Cable
- Hand-free earpiece with microphone
- 2 accessory adapters (necessary to charge the handheld and connect the antennas and accessories via USB Cable)
- Magnetic vehicle mount antenna with cable
- Leather case
- User Manual, Quick Start guide, CD-ROM with software

MARITIME SATELLITE PHONES



ISATPHONE 2

STAY CONNECTED IN THE MOST
EXTREME AND REMOTE LOCATIONS

The IsatPhone 2 is designed to operate even in the most extreme conditions: from searing heat to icy blast, desert sandstorm or monsoon rain.

And with a faster network registration (under 45 sec), an unrivalled battery life offering 8 hours talk time and 160 hours of standby time, users can always depend on the IsatPhone2. It provides excellent voice clarity, call stability and an easy-to-use interface with large high visibility screen. Thanks to the GPS location services, position can be sent by text message in case of emergency.

A TOUGH PHONE FOR A TOUGH WORLD

CHARACTERISTICS

- Dimensions: 169 x 52 x 29 mm (without antenna)
169 x 75 x 29 (with antenna)
- Weight: 318 gr including battery
- Display: high contrast colour screen
- Battery life Talk Time: 8 hours
- Battery life Standby Time: 160 hours
- Voice: 2.4kbps voice codec
- SMS: 160 Characters supported
- GPS Location Data: view position and send as text/
email

- Ingress Protection: IP65 / IK04
- Bluetooth 2.0 supported

INTERFACES

- Bluetooth 2.0
- Micro USB
- Audio Socket
- Antenna Port

INCLUDED IN THE PACK

- IsatPhone 2 Handset
- Battery
- Chargers
- Main universal AC charger (4 adaptors)
- Car charger 10-30V
- Micro USB cable
- Wired hand free headset
- Quick start guide (8 languages)
- Support USB memory driver
- Holster

GLOBALSTAR GSP 700

HIGH FUNCTIONALITY, LIGHT HANDLED

The GSP 1700 is a small and light satellite phone delivering high quality voice and data transmission services. Using the optional installation kits, you can easily create a complete satellite phone system in your vehicle or vessel from the smallest car to the largest aircraft carrier. Antenna and cable length options were designed for ease of installation on land or sea – or simply use the phone hands-free with the optional industrial noise-canceling headset.



STAYING CONNECTED ANYWHERE

CHARACTERISTICS

- Dimensions: 135 x 55 x 37 mm
- Weight: 200 gr
- Display: backlit color display optimized for outdoor
daytime viewing
- Intuitive user interface for out-of-the-box
functionality
- Internally stowed antenna
- Data: up to 13 kbps
- Battery life: up to 4 hours (talk time) and
36 hours (stand by time)

- SMS 160 characters supported
- GPS functionality: for position location services

INTERFACES

- USB Interface
- Mini USB Data port

INCLUDED IN THE PACK

- Globalstar GSP 1700
- AC charger
- Quick-start guide, user manual on CD-ROM

THURAYA XT-PRO

UNIVERSALLY PROFESSIONAL

Designed for professional users, Thuraya XT-Pro is one of the most advanced satellite phone which is ruggedized and equipped with long battery life, ensuring connectivity no matter where you go. With built-in GPS, Beidou and Glonass capability for highest flexibility in all regions, you can make phone calls, send messages in satellite mode and also use a satellite data connection to send and receive emails or browse the web with a connected laptop or PC. For emergencies, it has a dedicated SOS button with advanced navigation and tracking features.



CHARACTERISTICS

- Dimensions: 128 x 53 x 27 mm
- Weight: 212 g
- Call and messaging services: Satellite calls, SMS, SMS to email, fax
- Data services:
 - GmPRS up to 60/15 kbps (down/up)
 - Circuit switched 9.6 kbps
- Battery life - Talk time: Up to 9 hours
- Battery life - Stand-by Time: Up to 100 hours
- Global Navigation Satellite System (GNSS): GPS, BeiDou, Glonass
- Display: 2.4" toughened Gorilla glass outdoor display
- Ingress Protection: Jet water resistant, dust resistant, shock proof (IP55/IK05)
- 13 languages supported

THURAYA XT-LITE

RELIABLE. EASY. COST-EFFECTIVE.

The Thuraya XT-Lite provides highly reliable voice connectivity for an unbeatable value. It is designed for cost-conscious users needing to remain securely connected even in the most remote area. The Thuraya XT-Lite enables users to make phone calls and send SMS in satellite mode in more than 160 countries across Europe, Africa, Asia and Australia.



CHARACTERISTICS

- Dimensions: 128 x 53 x 27 mm
- Weight: 186 g
- Services: Satellite calls and satellite SMS
- Network Frequency: L-Band
- Battery life - Talk time: Up to 6 hours
- Battery life - Stand-by Time: Up to 80 hours
- Network features: Call barring. Call diverting. Conference calls. Call waiting. Closed User Group. Voice mail
- Organizer: Alarms. Calendar. Calculator. Stopwatch. World time

THURAYA XT-PRO DUAL

THE DUAL-MODE, DUAL SIM PHONE FOR SATELLITE AND TERRESTRIAL COMMUNICATIONS.

By using both a satellite SIM card and a GSM SIM card, you can now move in and out of terrestrial coverage with ease, enjoying connectivity no matter where you are. Highly ruggedized with a shockproof, water and dust resistant body, the XT-PRO DUAL also comes with advanced navigation capabilities through GPS, BeiDou, Glonass and Galileo for the highest flexibility in all regions.

CHARACTERISTICS

- Call and messaging services: Satellite calls, SMS, SMS to email, fax
- 2 SIM card slots: GSM (2G, 3G) & SAT (Mini-SIM)
- Data services:
 - Satellite: GmPRS up to 60/15 kbps (down/up), circuit switched 9.6Kbps
 - GSM/3G: up to 7.2/5.73 Mbps(down/up)
- Battery life - Talk time: Up to 11 hours

- Battery life - Stand-by Time: Up to 100 hours
- Global Navigation Satellite System (GNSS): GPS, BeiDou, Glonass, Galileo
- Display: 2.4" toughened Gorilla glass outdoor display
- Ingress Protection: Jet water resistant, dust resistant, shock proof (IP55/IK05)
- Multi-language firmware (13 supported)



SATELLITE MODEMS



	THURAYA ORION IP	THURAYA ATLAS IP	SAILOR 500	FX 500	SAILOR 250
NETWORK/ COVERAGE	THURAYA	THURAYA	inmarsat	inmarsat	inmarsat
MANUFACTURER	Hughes	Hughes	Cobham Satcom	Wideye	Cobham Satcom
DIAMETER ANTENNA	277 x 391 mm	278 x 324 mm	797.5 x 687 mm	653 x 652 mm	330 x 276 mm
SIZE BDU	46 x 281 x 233 mm	294 x 244 x 69 mm	366.5 x 264.5 x 42.5 mm	360 x 250 x 67 mm	366.5 x 264.5 x 42.5 mm
WEIGHT ANTENNA	3.2 kg	3 kg	23 kg	19.2 kg	3.9 kg
WEIGHT BD	2.2 kg	2.95 kg	2.5 kg	3.9 kg	2.5 kg
STANDARD IP - INTERNET SPEED	444 kbps Up & Down	444 kbps Up & Down	432 kbps Up & Down	432 kbps Up & Down	284 kbps Up & Down
STREAMING IP	16,32,64,128, 256 or 384 kbps	16,32,64,128, 256 or 384 kbps Asymmetric mode	8,16,32,64,128, or 256 kbps	8,16,32,64,128, or 256 kbps	8,16,32,64 or 128 kbps
WI-FI					
VOICE			 9 lines simultaneously		 6 lines simultaneously
SMS					
FAX					
DATA INTERFACE	4 Ethernet ports	4 Ethernet ports	4 Ethernet ports	4 Ethernet ports	4 Ethernet ports
ISDN					
INGRESS PROTECTION	IP56 (Antenna) IP31 (BDU)	IP56 (Antenna) IP31 (BDU)	IPX6 (Antenna) IP31 (BDU)	IP56 (Antenna) IP31 (BDU)	IPX6 (Antenna) IP31 (BDU)



FX 250	SAILOR 150	FX 150	IRIDIUM PILOT	FLEET ONE	THURAYA SEASTAR
Wideye	Cobham Satcom	Wideye	Iridium	Cobham Satcom	Thuraya
320 x 277 mm	292 x 275.4 mm	320 x 277 mm	570 x 230 mm	275.6 x 292 mm	164 x 170 mm
360 x 250 x 67 mm	231 x 278 x 41 mm	366 x 250 x 67 mm	250 x 200 x 55 mm	278 x 264 x 41 mm	210 x 205 x 85 mm
3 kg	3.9 kg	3 kg	12.5 kg	3.9 kg	1.1 kg
3.9 kg	2.8 kg	3.9 kg	1.35 kg	2 kg	1.2 kg
284 kbps Up & Down	150 kbps Up & Down	150 kbps Up & Down	134 kbps Up & Down	100 kbps Up & Down	60 Kbps/ 15Kbps
8,16,32,64 or 128 kbps	✗	✗	✗	✗	✗
✓	✗	✗	✗	✗	✗
✓	✓	✓	✓ 3 lines simultaneously	✓	✓
✓	✓	✓	✗	✓	✓
✓	✗	✓	✗	✗	✗
4 Ethernet ports	2 Ethernet ports	2 Ethernet ports	1 Ethernet port	1 Ethernet port	1 Ethernet port
✗	✗	✗	✗	✗	✗
IP56 (Antenna) IP31 (BDU)	IPX6 (Antenna) IP31 (BDU)	IP56 (Antenna) IP31 (BDU)	IP66 (Antenna)	IP56 (Antenna) IP44 (BDU)	IP66 (Antenna) IP32 (BDU)

SATELLITE HOTSPOTS



	 Iridium GO!	 Thuraya SatSleeve	 Thuraya SatSleeve +	 Thuraya SatSleeve Hotspot	 Inmarsat IsatHub
NETWORK/ COVERAGE	 iridium Everywhere	THURAYA 	THURAYA 	THURAYA 	 inmarsat
SIZE	114 x 83 x 32 mm	138 x 69 x 30 mm	138 x 69 x 42	142 x 69 x 38	180 x 17 x 30 mm
WEIGHT	305 g	220 g	256 g	290 g	850 g
ANTENNA	Integrated	Integrated	Integrated	Integrated	Integrated
BATTERY DURATION	5.5 hours in talk time - 15 hours in stand by	3 hours in talk time - 36 hours in stand by	3 hours in talk time - 70 hours in stand by	3 hours in talk time - 70 hours in stand by	2 hours in talk time - 24 hours in stand by
INGRESS PROTECTION RATE	IP65	Not rated	Not rated	Not rated	IP65
MOBILITY	**	***	***	***	*
TRACKING/ LOCATION-BASED SERVICES	✓	✗	✗	✗	✗
SOS BUTTON	✓	✓	✓	✓	✗
SMS	✓	✓	✓	✓	✓
DATA SPEED	Up to 9.6 kbps	Download up to 60 kbps Upload up to 15 kbps (GmPRS)	Download up to 60 kbps Upload up to 15 kbps (GmPRS)	Download up to 60 kbps Upload up to 15 kbps (GmPRS)	Download up to 384 kbps Upload up to 240 kbps (GmPRS)
VOICE CAPABILITIES	Yes from Iridium GO! iOS or Android app	Yes from Thuraya SatSleeve iOS or Android app (via bluetooth)	Yes from Thuraya SatSleeve iOS or Android app (via bluetooth)	Yes from Thuraya SatSleeve iOS or Android app (via bluetooth)	Yes from IsatHub voice iOS and Android app
WIFI CAPABILITIES	Yes - Up to 30 m radius area	Yes - Up to 30 m radius area	Yes - Up to 30 m radius area	Yes - Up to 30 m radius area	Yes - Up to 30 m radius area
MULTI-USER ENVIRONMENT	Data: Up to 5 simultaneous connections Voice: 1 user	Only 1 user	Only 1 user	Only 1 user	Data: Up to 10 simultaneous users Voice: 1 user
CONTRACT TYPE	Prepaid & Postpaid	Prepaid & Postpaid	Prepaid & Postpaid	Prepaid & Postpaid	Prepaid & Postpaid

SATELLITE HANDSETS



	IRIDIUM EXTREME	IRIDIUM 9555	INMARSAT ISATPHONE 2	THURAYA XT PRO DUAL	THURAYA XT-PRO	THURAYA XT-LITE	GSP 1700
NETWORK/ COVERAGE							
SIZE	140 x 60 x 27 mm	143 x 55 x 30 mm	169 x 75 x 29 mm	138 x 57 x 27 mm	128 x 53 x 27 mm	128 x 53 26.5 mm	135 x 55 x 37 mm
WEIGHT	247 gr	266 gr	316 gr	222 gr	212 gr	186 gr	200 gr
BATTERY LIFE - TALK TIME	Up to 4 hours	Up to 3 hours	Up to 8 hours	Up to 11 hours	Up to 9 hours	Up to 6 hours	Up to 4 hours
BATTERY LIFE - STAND BY	Up to 30 hours	Up to 30 hours	Up to 160 hours	Up to 100 hours		Up to 80 hours	Up to 36 hours
DISPLAY	Glare resistant LCD display	Glare resistant LCD display	Glare resistant LCD display	Gorilla glass	Glare resistant Color display	Standard Color display	Glare resistant LCD display
ANTENNA DESIGN	Retractable Omni-directional antenna	Retractable Omni-directional antenna	Fold-out directional antenna	Retractable Omni-directional antenna	Retractable Omni-directional antenna	Retractable Omni-directional antenna	Retractable Omni-directional antenna
INGRESS PROTECTION	IP65	IP55	IP65	IP55	IP55	N/A	N/A
INCOMING CALLS	Incoming call alert if antenna stowed or deployed						
SMS	✓	✓	✓	✓	✓	✓	✓
DATA	Up to 9.6 kbps	Up to 9.6 kbps	2.4 kbps	GmPRS: Up to 60 kbps/15 kbps Data: 9.6 kbps Thuraya XT PRO DUAL: 2G/3G		✗	Up to 9.6 kbps
LOCATION-BASED SERVICES	Share location via SMS, SBD Programmable SOS button	✗	Tracking button Programmable tracking assistance button Share location via SMS	GPS systems: GPS, BeiDou, or Glonass Thuraya SOS Button		Send GPS position function	✗
BLUETOOTH	✗	✗	✓	✗	✗	✗	✗
LANGUAGES SUPPORTED	21	21	8	13	13	13	6
DOCKING UNITS AVAILABLE	Fixed Vehicular Maritime		Fixed Vehicular Maritime	No	Fixed	No	Fixed Vehicular Maritime
CONTRACT TYPE	Prepaid & Postpaid						
CHECK YOUR BALANCE	Send empty SMS to 2888	Send empty SMS to 2888	Dial *106#	Dial 150		Dial 888	

